



# Design Year 7 CET Assessment Revision



This document contains the key information that you will need for your Creative Education Trust Assessment.

## **Some strategies to help maximise how you use this pack:**

- Copy out information to help you learn.
- Test yourself on information (Look-Cover-Test-Check).
- Read through the pack silently to deepen your understanding.

## **Some additional tasks that could help you:**

- Look at a range of safety rules and consider the risk and how to avoid it.
- Do things that take you out of your comfort zone. (Answer questions in class, offer to read out, take part in PA club).
- Answer questions which ask you to evaluate
- Online Lessons: <https://www.bbc.co.uk/bitesize/guides/zkvny4j/revision/1>
- <https://www.chantryschool.com/wp-content/uploads/2020/03/revision-strategies.pdf> revision techniques to try

**The Hart School nor The Creative Education Trust take responsibility for content of external weblinks. Use them at your discretion.**



# Health & Safety



## Year 7 Knowledge Review



Remember when you do the assessment **PLEASE** only answer the **TIMBER & PAPER** questions.

You will have an **assessment** in Design, it will cover all the work we have done in Design from September.



These slides are here to help you prepare for the assessment.

Read through each slide and complete the

## ReVISION

When you see this image – you have a task to do!



- 1 Never enter a workshop without permission
- 2 Always make sure you fully understand instructions
- 3 If in doubt about something you should ask your teacher
- 4 Always make sure that you are wearing the correct protective equipment
- 5 Make sure that any long hair is tied back when performing practical tasks
- 6 Always follow instructions from your teacher; including where to leave your bags
- 7 Never complete practical work sitting down, store your seat safely away
- 8 Report any spillages or breakages immediately to your teacher
- 9 If you spill anything on yourself immediately wash with water and call for your teacher



Make a list of all the hazards you can see in the image. Now pick your top 3 and explain how you could prevent them.





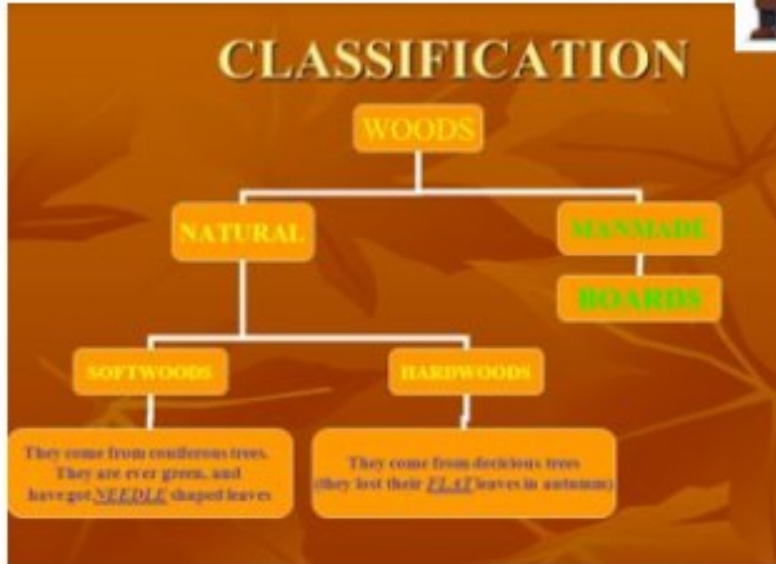
# Materials - Timber



## Timber – the facts!



Remember making your key ring, you covered all of this then.



**Finishes**  
It can prevent wood from rotting away by protecting it.



**Varnishes & Lacquers**  
These are available in oil, water and solvent based



**Painting**  
These are available in oil, water and solvent based, help to enhance the visual appearance of the finished product.

**Polish**  
This is applied to wood to protect it from moisture, insect attack, enhances the colour of the grain and makes it easier to clean the surface

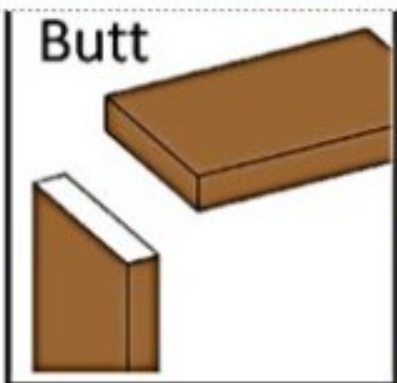


**Wax**  
The wax fills the porous surface of the timber and layers are built up on the surface to protect the finished product  
**Oil**  
Some timbers such as teak are naturally oily. Applying oil helps improve the appearance of the grain. It also protects it for out door use. Vegetable oil can be used on timber that will come into contact with food.



Create a brainstorm /mind map to have all the key details linked to timbers.  
Key headings to help you

- Classification
- Tools
- Construction
- Surface finishes



**Butt**

This is the simplest form of joining timber and as the name suggests the lengths are simply butted together and glued. Commonly used in picture frames, skirting boards. Mitre Box Jig can aid cutting Mitre Joints.

**Process**  
Ensure ends of both section are perfect 90° angles. Glue ends and clamp

<b>Advantages:</b> Simple	<b>Disadvantages:</b> Weak with only glue to support it End grain will absorb a lot of the glue Can require additional aids such as dowelling
------------------------------	--

Please follow the link and watch the video.

[Video 1](#)



[Video 1](#)



# Sustainability

## Sustainability

### HOW CLT CAN SAVE THE WORLD

THREE AMBROS COE WHILE THEY GROW BUT THAT STOPS WHEN THEY MATURE.

IF WE CUT THEM DOWN WE CAN REPLANT AND MAINTAIN THE CARBON CYCLE.

USING THE TIMBER TO BUILD A HOUSE CREATES A LONG TERM CARBON STORE. -19T CO<sub>2</sub>

CLT IS A WAY OF ENGINEERING TIMBER ALLOWING US TO BUILD LARGE NUMBERS OF HOMES... ..SO WE CAN STORE LOTS OF CARBON

AND REDUCES THE USE OF POLLUTING AND HIGH ENERGY MATERIALS.

THE MORE WE BUILD WITH TIMBER, THE MORE DEMAND WE CREATE.

THIS COULD LEAD TO LARGE SCALE REFORESTATION OF THE PLANET... ..WHICH IS THE ONLY VISIBLE WAY OF HALTING GLOBAL WARMING.



## Drawing Skills



You have covered **oblique**, **isometric** and **1-Point perspective**. Follow the links below and watch before having a go at the tasks.



- [Video 1](#) oblique
- [Video 2](#) isometric
- [Video 3](#) perspective

Please follow the link and watch the video.



Pick an object at home, now draw it using the 3 techniques you have looked at above. You can use colour or texture and tone to enhance your work.

This symbol indicates that a product can be recycled, but not necessarily that it has been itself produced from recycled materials.

Some of this may be new, but that doesn't matter.



**REPAIR**

**REUSE**

**REFUSE**

**REDUCE**

**RETHINK**

**RECYCLE**

**The 6Rs**

Use the 6Rs to make your own design sustainable and to minimise the environmental impact of other products.

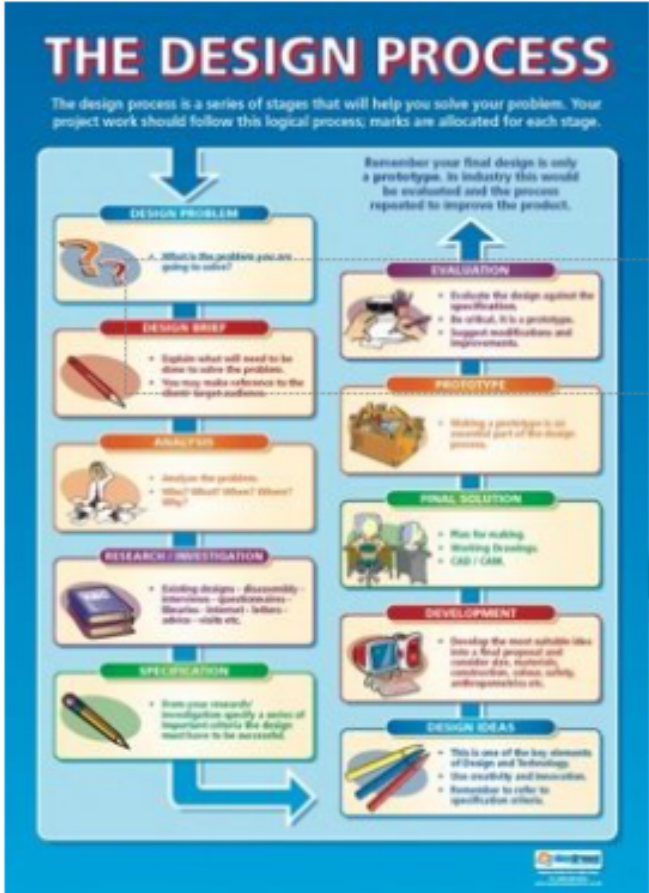
Make up a simple rhyme to help you remember the 6Rs. You may want to research it some more.

Please follow the link and watch the video. [Video link](#)





# Design Process



Identify the main tools in this picture and what they are used for?



Can we write a mnemonic to remember the steps of the design process?



We use paper everyday in school, but do you know the sizes? There is a simple rule to follow when remembering paper sizes, can you work it out from this image on the left?



What's the rule to remembering paper sizes? What happens to the number as the size gets bigger?

So do you feel ready for the assessment? Look through your notes from today and double check they are all done. If you have any questions, then email your class teacher. Good luck!

Name the process, which has been used on this card and explain why it is a good idea.



ReVISION





# Keywords / Definitions



<b>Abrasive</b>	<b>A material which can wear others away.</b>
<b>Aesthetics</b>	The artistic, tastefulness and beauty of the product.
<b>Analysis</b>	A detailed examination of the elements or structure of an object
<b>Design</b>	To create a plan or scheme either from new ideas or by presenting existing materials in a new way.
<b>Design brief</b>	A statement of what needs to be designed and/or made.
<b>Design process</b>	Process of designing from identifying a need, generating a design, planning and making it and evaluating its performance.
<b>Evaluation</b>	Assessment of how an artefact functions
<b>Prototype</b>	A model which is made to test whether a design will work.
<b>Sustainable Design</b>	Designing a product using the philosophy of RETHINK, REFUSE, REDUCE, REUSE, REPAIR, RECYCLE in order to reduce the use of energy and environmental impact of products. (each is defined in this glossary)